





V1.0	2020-11	



	1
1.1		1
1.2		1
1.3		1
1.4		1
1.5		2
IO	3
2.1		3
2.2		3
2.3		6
	8
3.1		8
3.2		11
3.3		21
3.4		23
3.5		25
3.6		27
3.7		29
3.8		30
4	32



1

2

3

:

1)

2)

3)

4)

5)

6)





1)

2)

3)

4)

5)

6)

7)

50

8)

IO

1 8 *1

2 *1

3 *4

4

1 8 *1

2 *1

3 24V *1

4 *1





X045

0

X047

X046

1 X041

" "

" "

1

2 X042

" "

" "

2

X043

" " " "

1 X024

1

1

1

" "





Y014

I O

I O



Y015

Y016 s



1

2

3

1

2 OK

OK

3 NG

NG

4

1

2



3

5

1

2

3

W

U Ä D

9

1

2

3

4

5

6

7 DXF

CAD

DXF

DXF

U

DXF

DXF

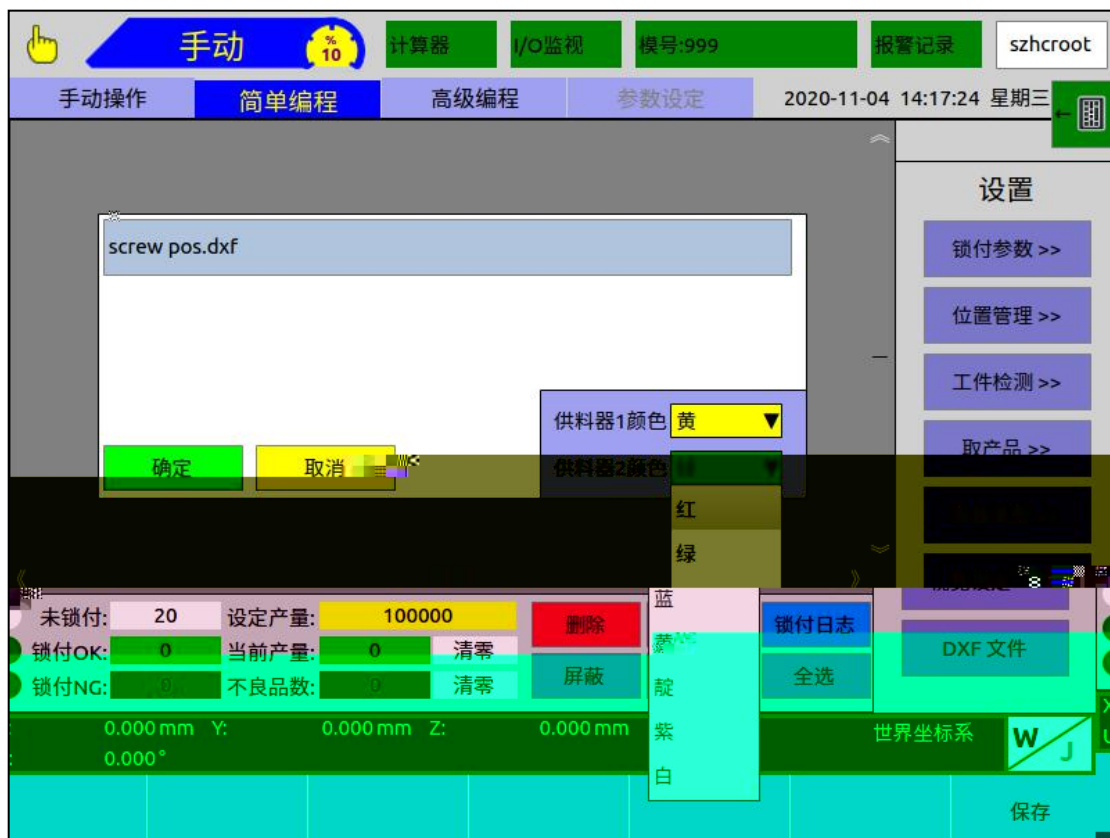
1

2

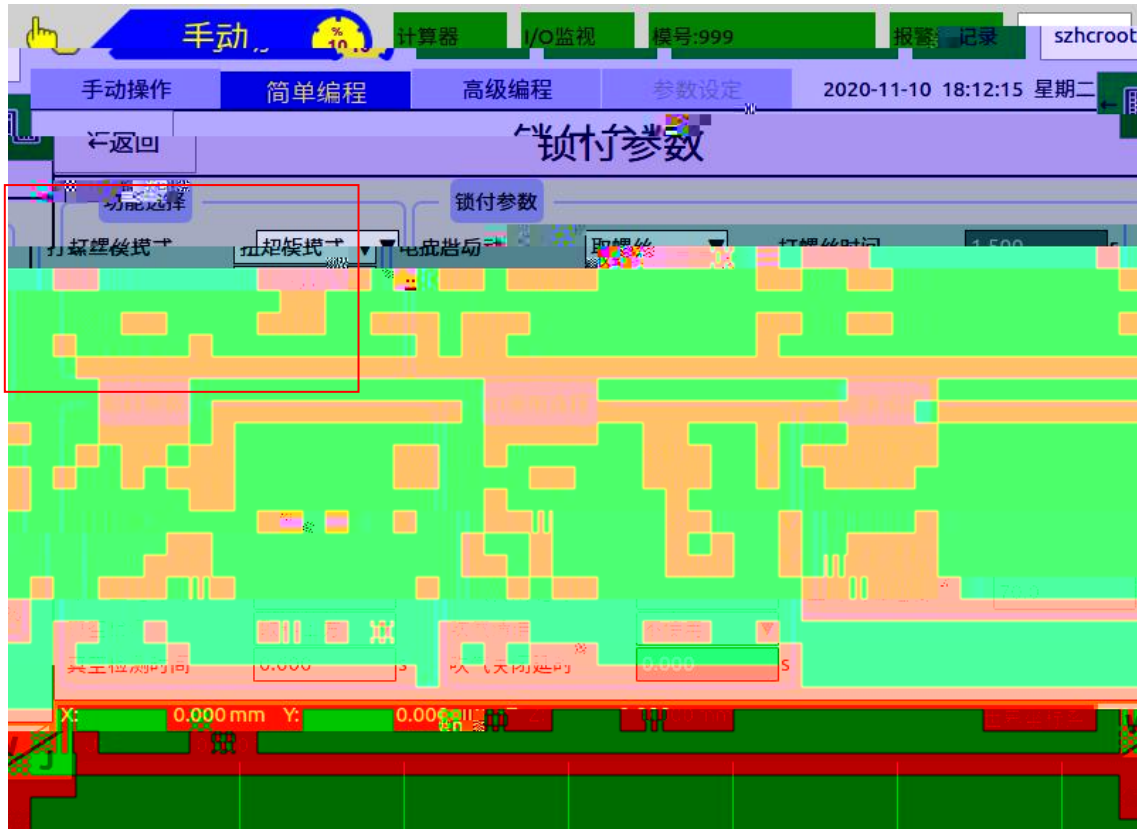
DXF

DXF

DXF



10



1

1

" Z " 0 " Z " "

"

Z " Z " 0 " Z "

" " " "

2

1 I O " X025 " I O

" X025 " ON

" "



	"	"	"	"	"	" X025	"
ON	OK						

	"	"	"	" X025	"	ON	
	"	"	"	" X025	"	ON	

2

"	"	"	"	"	"
"	"	"	"	"	"

"	"	"	"	"	"
"	"	"	"	"	"
"	"	"	"	"	"

"	"	"	"	"	"
OK	"	"	"	"	"
	"	"	"	"	"

3

"	"	"	"	"	"
"	"	"	"	"	"
"	"	"	"	"	"



5

6

Z

Z

7 Z

Z

Z

" Z

"

" Z

"

8 Z

Z

Z

" Z

"

" Z

"

9

10

IO " " " "

" X025 " ON " "

11

IO " " " " " X025

" ON " "





12

13

" "

" "

14

1



" "

" "

2

" "

" "



15

Z

Z

16

Z

Z

"

"

17

" X024

1"

1

" X027

2"

2

Z

" X024

1"

18

1

"

19

" " "

20

Z

21

ON

22

" X026 "

ON

" X026 "

OFF " "

23



23

" Y016 "



ON " Y016 " OFF " Y016 "
Z
Z " "
24

" Y016 " OFF " X020 "
" "
25

" Y030 "
" Y030 " i





1

" " " "

Z " " " "

2

Z Z

3

Z " "

4

Z

5

6

Z " X026 "

OFF " "

7



" Y015 " " Y015 " ON

8

" Y017 " " Y017 " ON

9

" Y017 " ON

10

XY

11

XY

12

The screenshot displays a CNC control interface in manual mode. At the top, there are navigation buttons for '手动' (Manual), '计算器' (Calculator), 'I/O监视' (I/O Monitor), '模号:999' (Model: 999), '报警记录' (Alarm Record), and 'szhrcroot'. Below this is a menu bar with '手动操作' (Manual Operation), '简单编程' (Simple Programming), '高级编程' (Advanced Programming), and '参数设定' (Parameter Setting). The current date and time are shown as '2020-11-10 17:48:19 星期二'. The main title is '位置参数' (Position Parameters). The interface is divided into sections for '工作台1' (Worktable 1), '工作台2' (Worktable 2), '视觉拍照' (Vision Photography), and '坐标系选择' (Coordinate System Selection), currently set to '世界坐标系' (World Coordinate System). A '锁付手势' (Locking Gesture) section has '左' (Left) selected. The '位置参数' table lists 10 positions with their coordinates and associated functions. On the right, there are checkboxes for '双工作台' (Dual Worktable), '待机位置' (Standby Position), '供料器1' (Feeder 1), and '供料器2' (Feeder 2), all of which are checked. Below these are input fields for 'X轴' (X-axis), 'Y轴' (Y-axis), and 'Z轴' (Z-axis), all set to 0.000. At the bottom, there are buttons for '上移' (Up), '下移' (Down), '替换' (Replace), '偏移' (Offset), '删除' (Delete), and '阵列' (Array). The status bar at the very bottom shows '0.000 mm/s', '0.000 mm/s', '0.000 mm/s', and 'W J'.

位置	坐标 (X, Y, Z)	说明
螺孔位置1	(X:0.000,Y:0.000,Z:-33.000)	[左手势][供料器1]
位置2	(X:50.000,Y:0.000,Z:-33.000)	[左手势][供料器1]
位置3	(X:100.000,Y:0.000,Z:-33.000)	[左手势][供料器1]
位置4	(X:150.000,Y:0.000,Z:-33.000)	[左手势][供料器1]
位置5	(X:0.000,Y:50.000,Z:-33.000)	[左手势][供料器1]
位置6	(X:50.000,Y:50.000,Z:-33.000)	[左手势][供料器1]
位置7	(X:100.000,Y:50.000,Z:-33.000)	[左手势][供料器1]
位置8	(X:150.000,Y:50.000,Z:-33.000)	[左手势][供料器1]
位置9	(X:0.000,Y:100.000,Z:-33.000)	[左手势][供料器1]
位置10	(X:50.000,Y:100.000,Z:-33.000)	[左手势][供料器1]



1

2

2

" X041 1" " X042 2"

3

4 1

1

1

1

5 2

2

2

2

6

7

1

2

3

4

5



Ⓔ



	"	"	"	X046	"		
						1	" X041
1"	1		2	" X042	2"		2

" " " X046 "

" " " " " "

" " " " X041 1" " X042 2"

2

3

7

1 " M015 "

[1]:

[1]:

.....(

2 1 " M016 W1 1"

" M017 V2 1"

W1 1 [1]: W1 1

V2 1 [2]: V2 1

[1]: W1 1

.....(

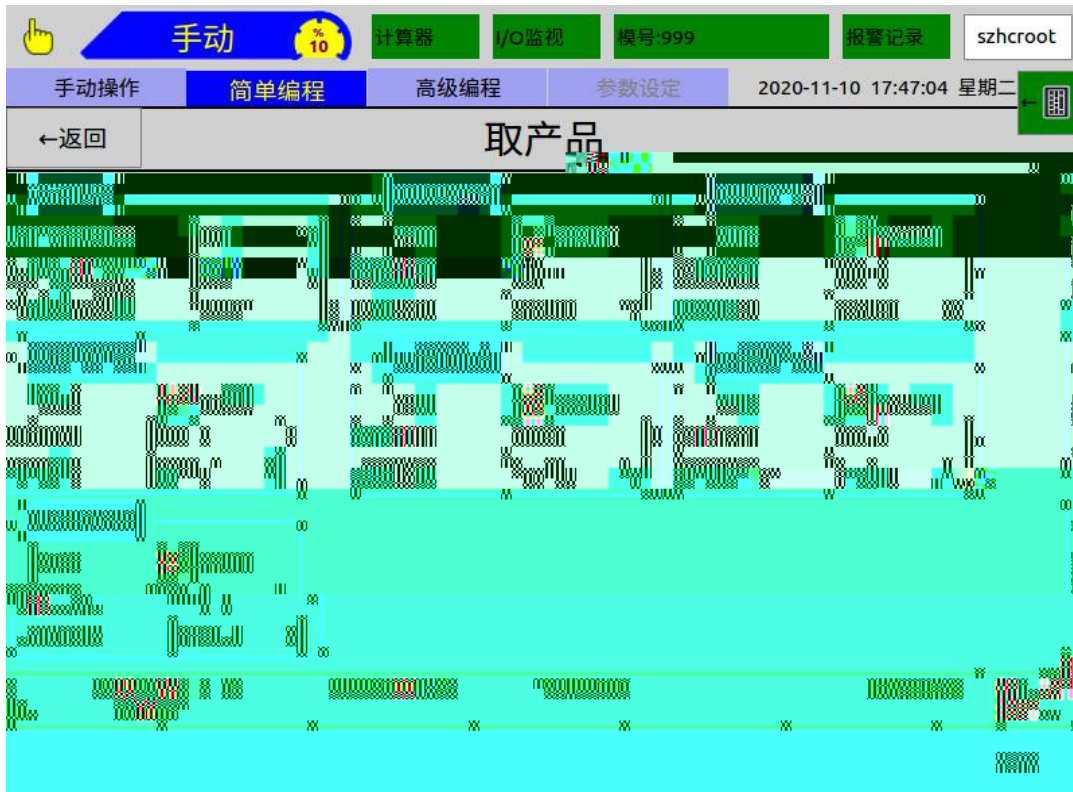
W1 1

[2]: V2 1

.....(



	∅	1							
4									1
	" X030 W1	1"	" X031 W1	2"	2	" X034 W∅	1"	" X035 W∅	
	2"								
	"	"	"	"					
5									
6			"	"	"	"			
		1	" Y020 W1	"	" X032 W1	1"	" X033 W1	1"	
	2	" Y024 W∅	"	" X036 W∅	1"	" X037 W∅	1"		
			"	"					
	1					"	"	ON	
		"	"		OFF				
	2						"	"	
	ON			"	"	OFF			
	3								
	"	"	ON			"	"	OFF	
7									
	"	"	ON	OFF					



1 W1 2 W2

" " " " " " " "

" " "

1 " " ON " "

" " "

2 " " ON " "

" " "

3 " " OFF " "

" " "

4 " " ON " "

" " "

5 " " ON " "

" " "

6 " " OFF " "

" " "

7 " " OFF " "

" " "



8 " " OFF " "

" "

9



1

2

3

10 " Y014 "

U

手动 10 计算器 I/O监视 模号:999 报警记录 szhcroot

手动操作 简单编程 高级编程 参数设定 2020-11-10 17:46:14 星期二

视觉设定

←返回

视觉功能选择 使用 ▼

视觉拍照模式 网口通信 ▼

视觉定位模式 单点定位 ▼

热启动确认 使用 ▼

数据等待时间 0.050 s

拍照动作时间 0.030 s

拍照输出间隔 0.030 s

拍照输出次数 5

0.000 mm X: 0.000 mm Y: 0.000 mm Z: 0.000 mm 世界坐标系 W J

保存

1

5

" "

6

" Y035 " ON

7

" Y035 "

8

" Y035 "

9

" "



V1 1

V2 2

10

XY Z

XY



- 1 " "
- 2 " "
- 3 " "
- 4 " "
- 5



华成工控

518000

0755- 2641 7678

0755- 2641 6578

8

